

Mountain Mods – Modular Removable Motherboard Tray – Instructions / Assembly

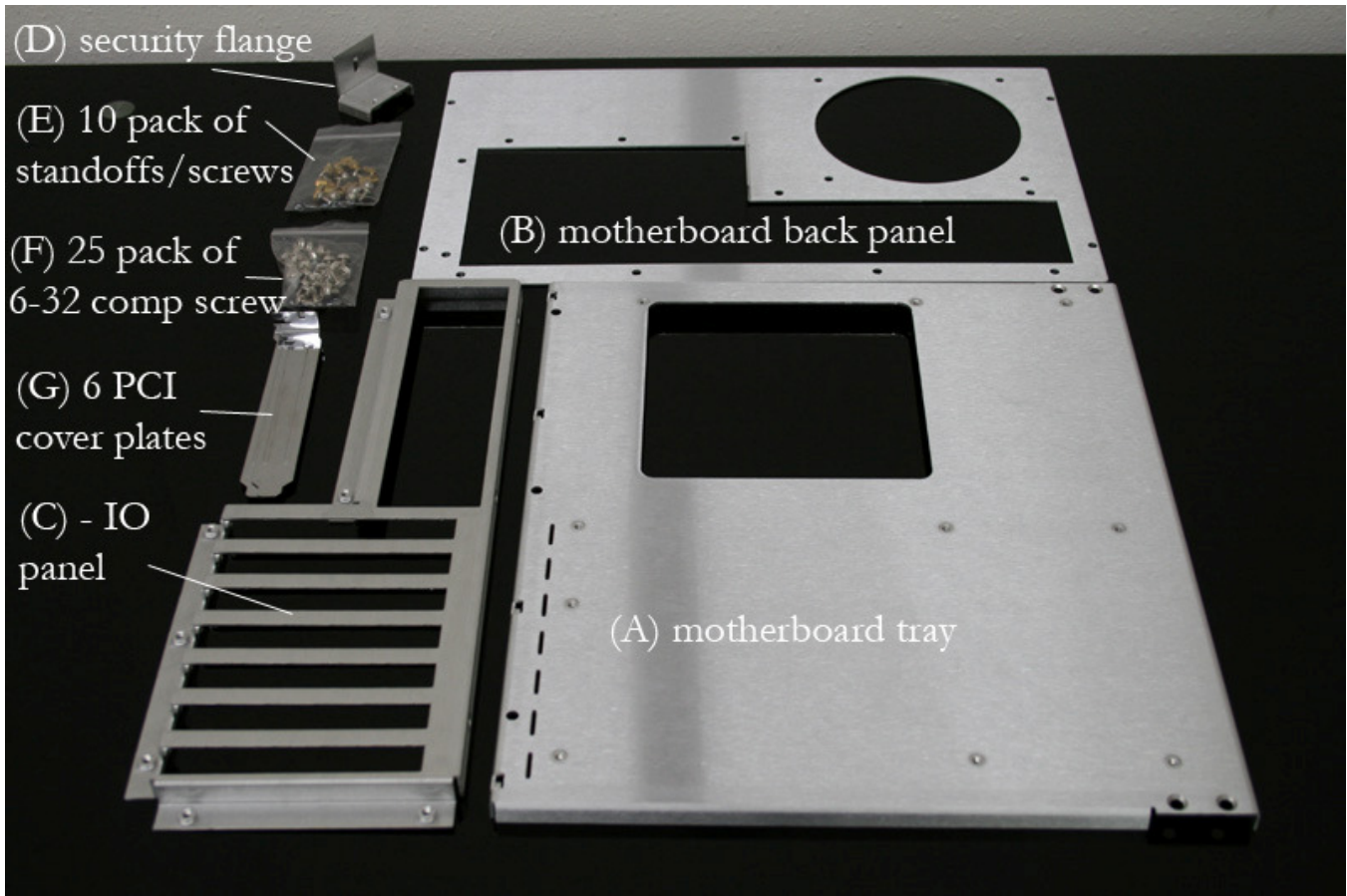
The Mountain Mod Modular/Removable motherboard tray comes flat packed. Each individual item is wrapped tightly in a special non-adhesive static cling plastic wrap. The wrap protects the finish from scratching, scuffing, fingerprints and movement during transit. It is important to TAKE CARE when removing the wrap. It is recommended to find the edge of the wrap and unroll it or grab a pair of scissors, create a pocket by lifting up an area of plastic and cut the wrap. Make sure if you use sharp instruments to not scratch into the parts. It is not recommended to rip the plastic as this may cause bending of parts from the pressure placed upon them.

PARTS LIST (items that come with the motherboard tray)

In the diagram on the next page items are listed that are included with the Mountain Mods Modular/Removable motherboard tray.

- A) Motherboard Tray** - this is what you mount your motherboard to.
- B) Motherboard Back Panel** – this is the exterior panel. It fastens to the rear of the case from the outside.
- C) I/O Panel** – this is what is known as the I/O (input/output) panel. I/O ports and PCI devices attach here.
- D) Security flange** – This attaches to a corner of the motherboard tray to eliminate movement once in place.
NOTE the comments below about the security flange as an option and which cases do not include it.
- E) 10 pack of standoffs/3mm computer screws** – The standoffs mount to the tray. The motherboard sits on the standoffs with appropriate mounting holes aligned. Then the 3mm screws tighten into the female end of the standoffs and hold the motherboard to the tray.
- F) 25 pack of 6-32 computer screws** – These 6-32 computer screws are used for the assembly of back panel to I/O Panel and I/O – back panel assembly to the motherboard tray itself. These are also included to fasten the PCI plates into the tray as well as other expansion devices.
- G) 6 x PCI cover plates** – These are included with the tray to cover any empty PCI slots that are not being used.

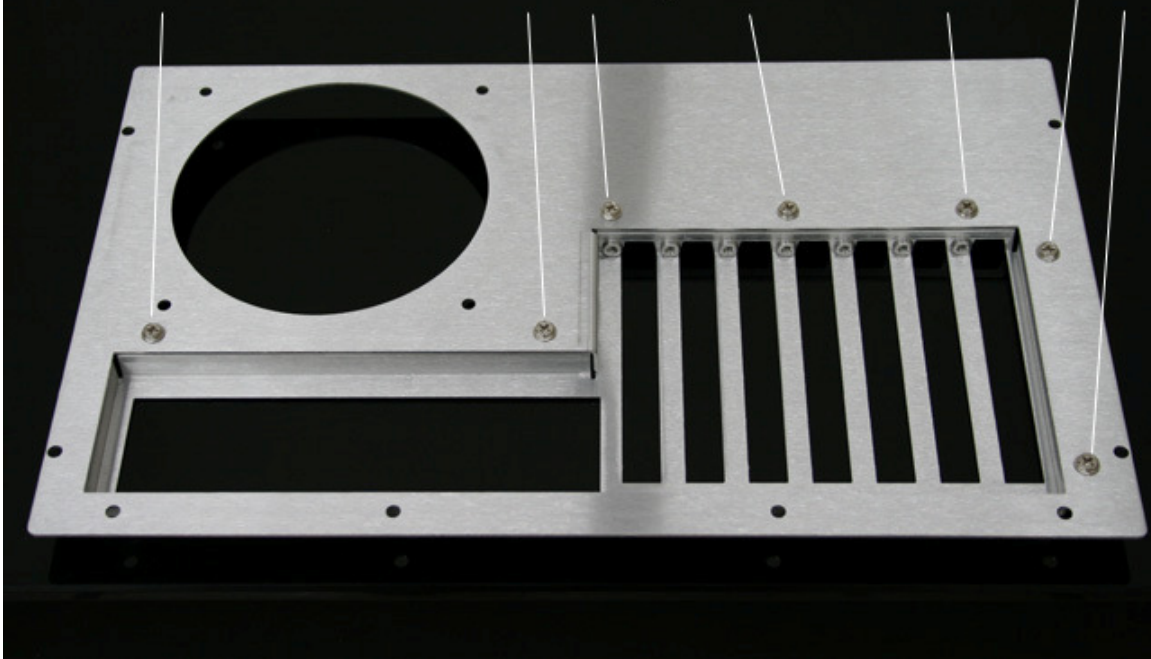
NOTE – trays included with case orders will not have items E (10 pack of standoffs/MB screws), F (25 pack of 6-32 computer screws), G (6 x PCI cover plates) wrapped with the tray. Those items are included in the CASTER PACK with case orders. ITEM D (security flange) is not included with orders of Horizontal Braces on U2-UFO's or Horizon Back panel Ascensions. It is also an OPTION that must be selected with the purchase of the individual motherboard tray order.



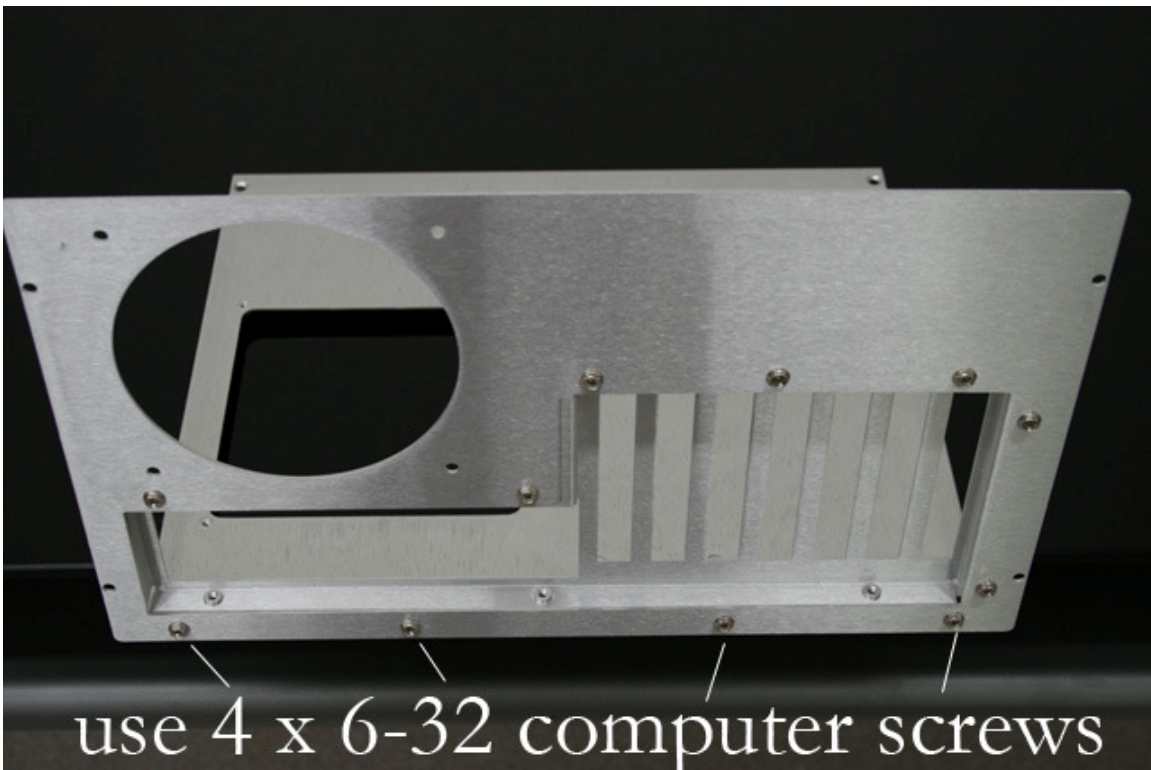
ASSEMBLY – instructions.

First take Part B (MB pack panel) and Part C (I/O panel). Place part C so that the flanges are up and the I/O slots are down on a flat surface. This would be the opposite of how it shows in the picture above. Next take Part B and align it so the single flange on it is pointing down. Rotate Part B so that the 120mm fan hole is on the left side. Then place Part B on top of Part C and align the clearance holes on the part with the threaded inserts on the flanges of the I/O Panel. Then take 7 x 6-32 computer screws from Pack (F) and fasten the back panel to the I/O panel. Put one screw in at a time without tightening until all screws are in place. After this your assembly of the two parts should look like the picture on the next page.

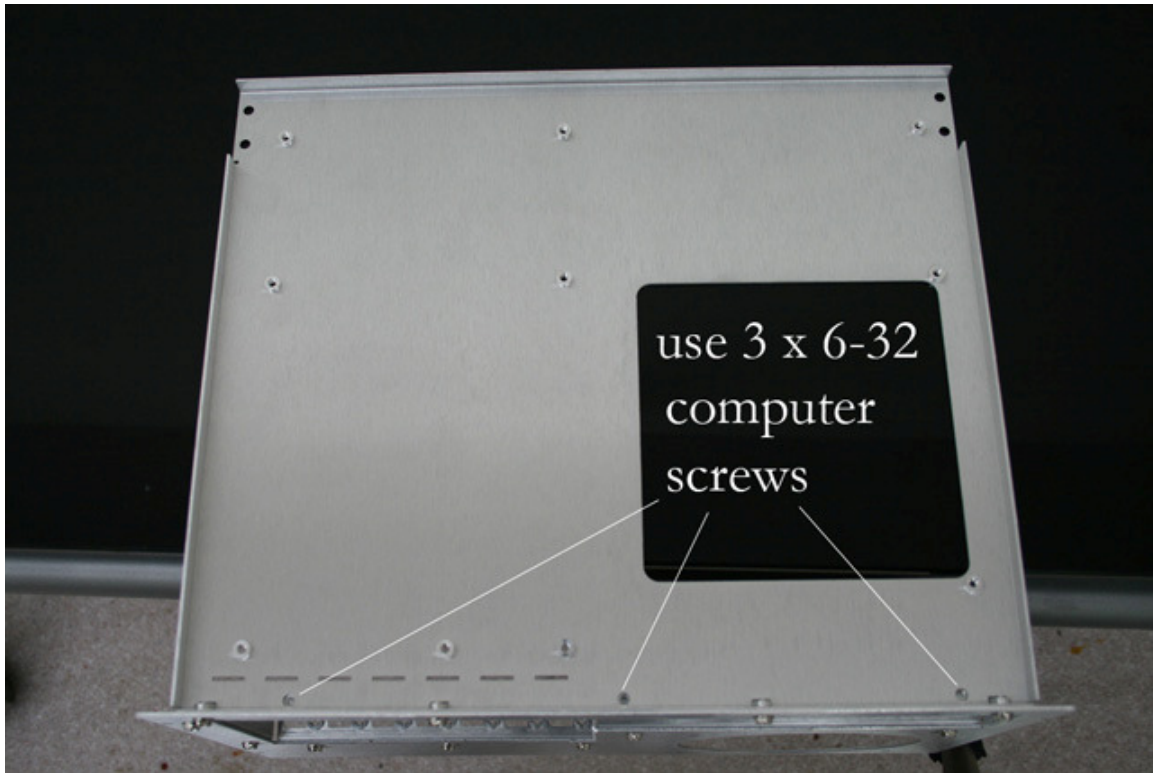
use 7 x 6-32 computer screws



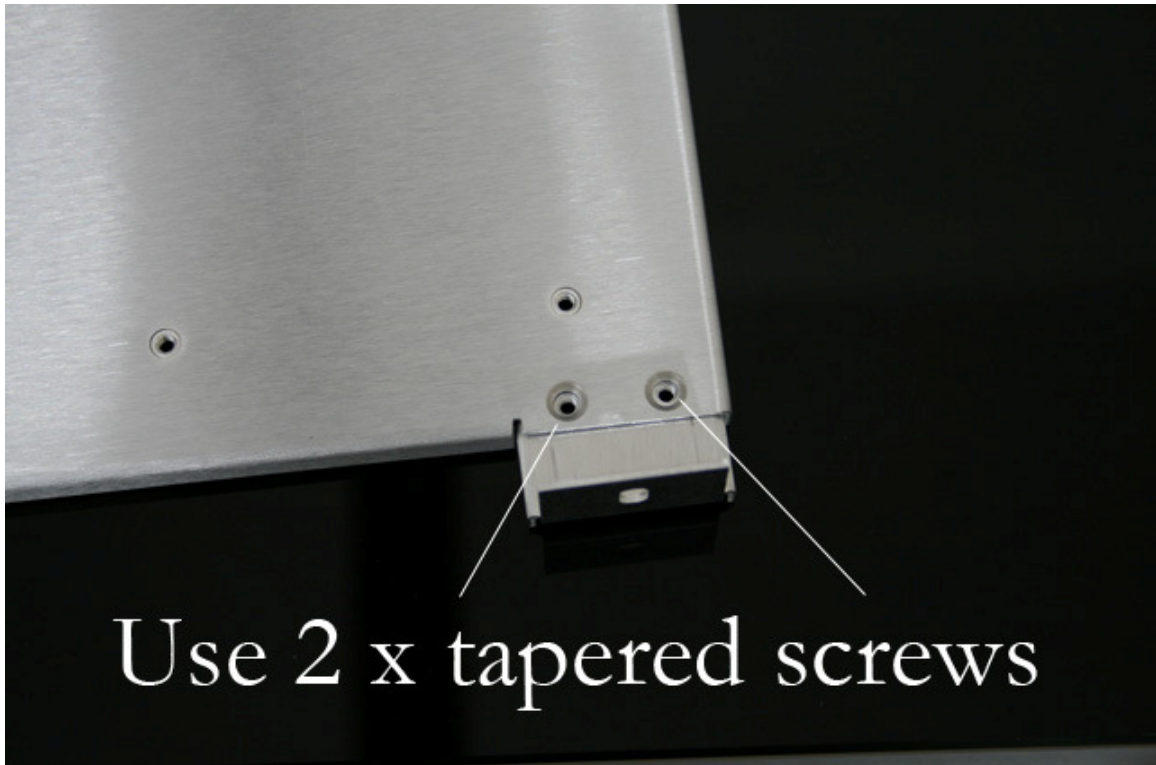
Next find Part A (Motherboard Tray). Place it flat on a table with the flanges down. This would mean the largest surface area side is up. Rotate it so that the flange with 4 x holes with threaded inserts is pointing towards you and slightly hang it over the table. These 4 holes with threaded inserts will align with the four clearance holes shown on the bottom of the panel assembly in the picture above. Take 4 x 6-32 screws (part F) and once again fasten the I/O – Back Panel assembly to the motherboard tray. See PIC below.



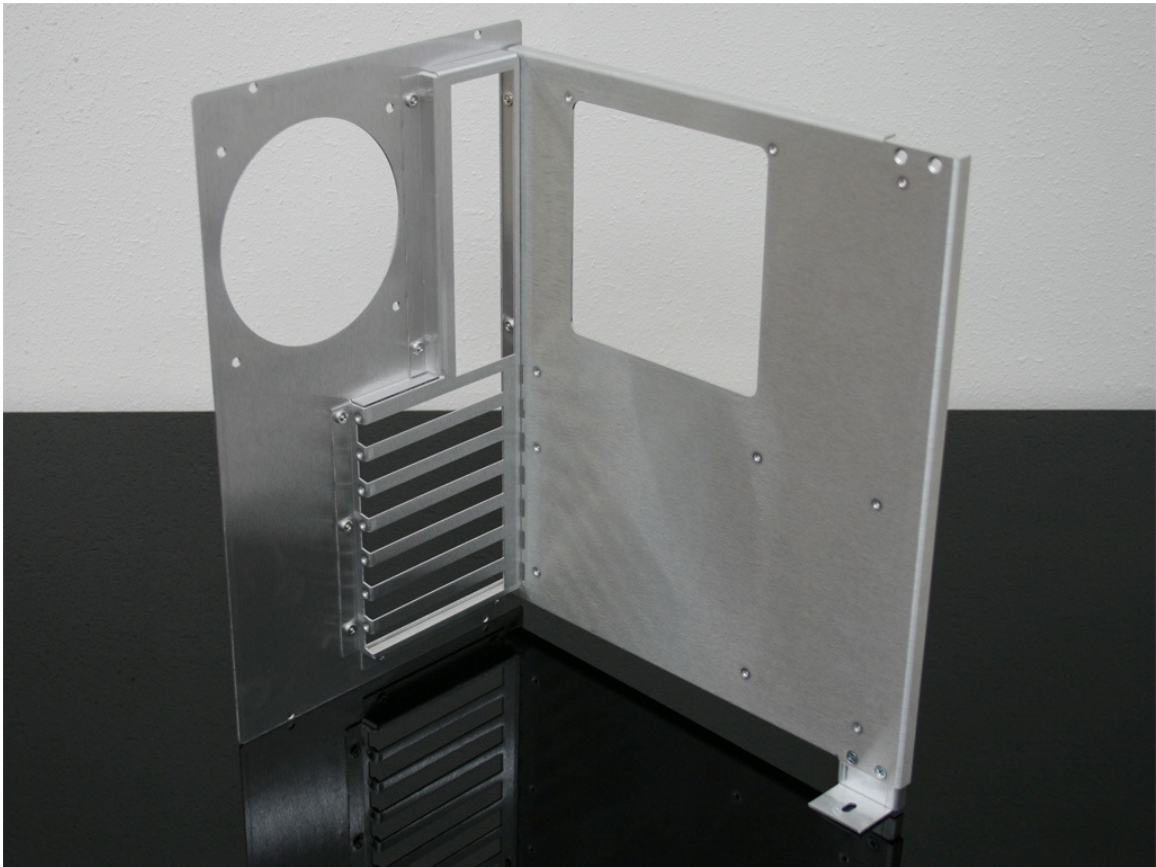
Now flip your 3 part assembly over (that's the I/O – Back panel – MB tray assembly). Place the assembly on the large flat surface area – where the motherboard assembles on the table. Allow for the Back Panel – I/O portion to hang down over the edge of the table. Use 3 x 6-32 computer screws to fasten into the I/O panel from the underside of the tray. This will tighten the assembly complete! See picture below for reference to 3 clearance holes/threaded inserts to fasten in this step.



After completing the above step you will have completed the assembly of the Motherboard Tray. If you purchased a case (with exception of horizontal Ascension or horizontal U2-UFO) you will have received a security flange. You will also receive this security flange if you select it in the Options of the motherboard tray purchase. The motherboard tray itself allows for fastening of the security flange on either side of the tray. This allows you to use the tray in standard or reverse ATX position. To run standard ATX fasten the security flange to the side that is nearest your PCI slots. To run reverse ATX position the security flange on the opposite side. If you receive a security flange with your order – you should also have 2 x tapered screws in your bag of 6-32 screws. Use these 2 x tapered screws to fasten the flange to the tray. The tray has countersunk holes for the tapered screws to fasten down flush to the surface of the tray. See PIC on next page for reference.



Now you are completely done and should have an assembly that looks like this – CONGRATULATIONS!



Now use the remaining standoffs/screws to attach your motherboard to the tray. Then attach expansion cards to the board. Use 6-32 computer screws from pack F to tighten expansion cards into place. Use PCI cover plates to fill empty slots.